

Gemelli



Fondazione Policlinico Universitario Agostino Gemelli IRCCS
Università Cattolica del Sacro Cuore



PER LA LOTTA AI TUMORI DEL SENO

AIGOM

ASSOCIAZIONE ITALIANA
GRUPPI ONCOLOGICI MULTIDISCIPLINARI



SCIENZA DEL RITORNO AL BENESSERE



CENTER FOR
INTEGRATIVE
ONCOLOGY

Agopuntura e riflessologia per le pazienti con carcinoma mammario

Claudia MAGGIORE, MD

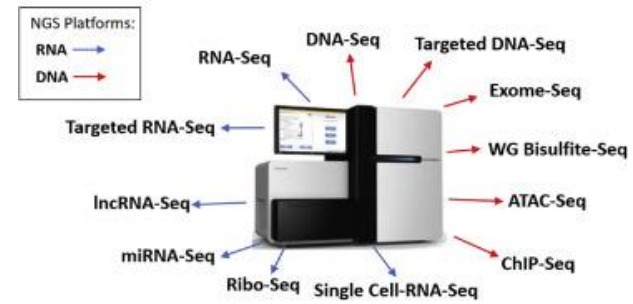
**Centro Komen Italia per i Trattamenti Integrati in Oncologia
Fondazione Policlinico Universitario A. Gemelli IRCCS**



300AC

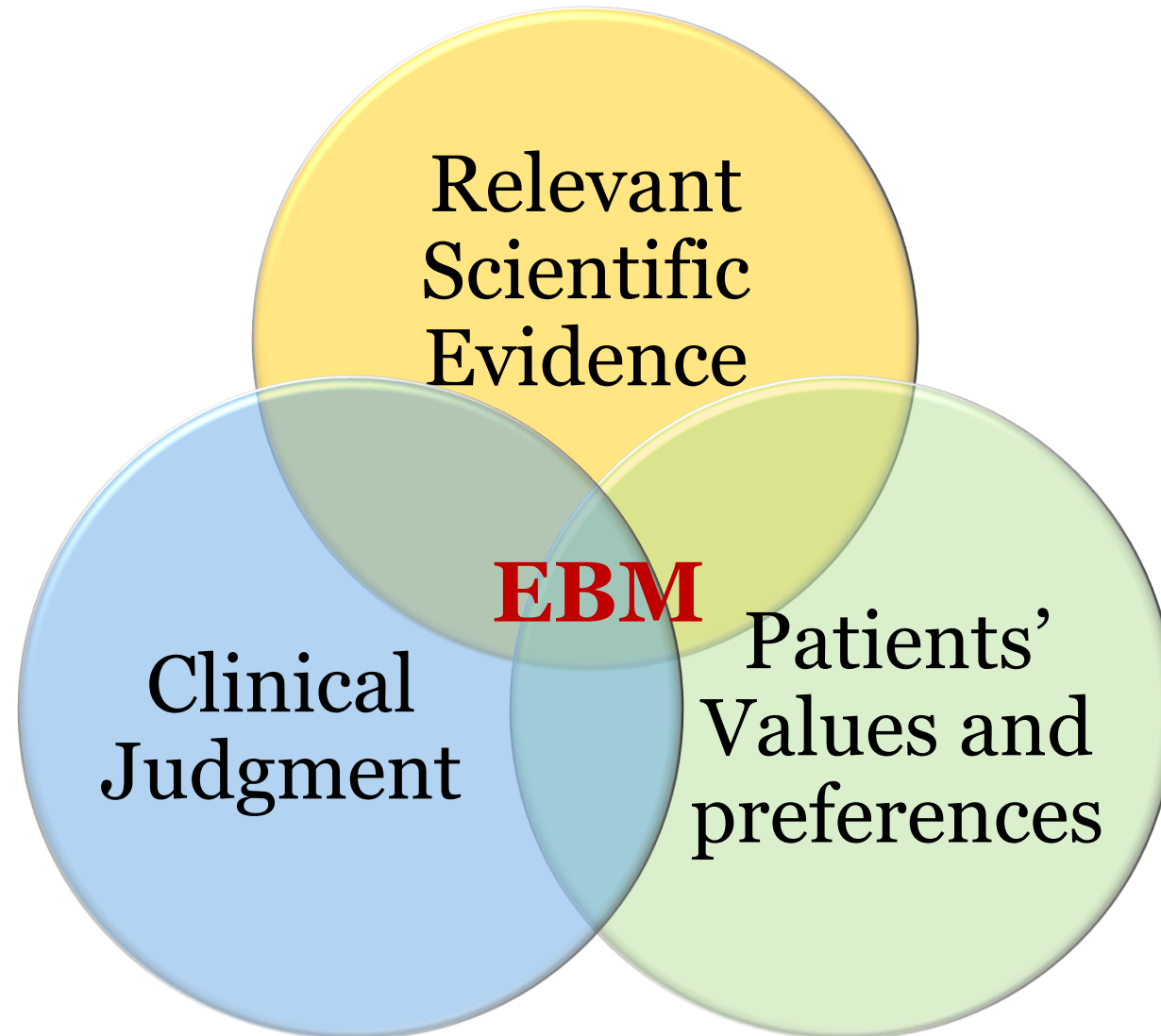
*The Yellow
Emperor's Classic of
Internal Medicine*

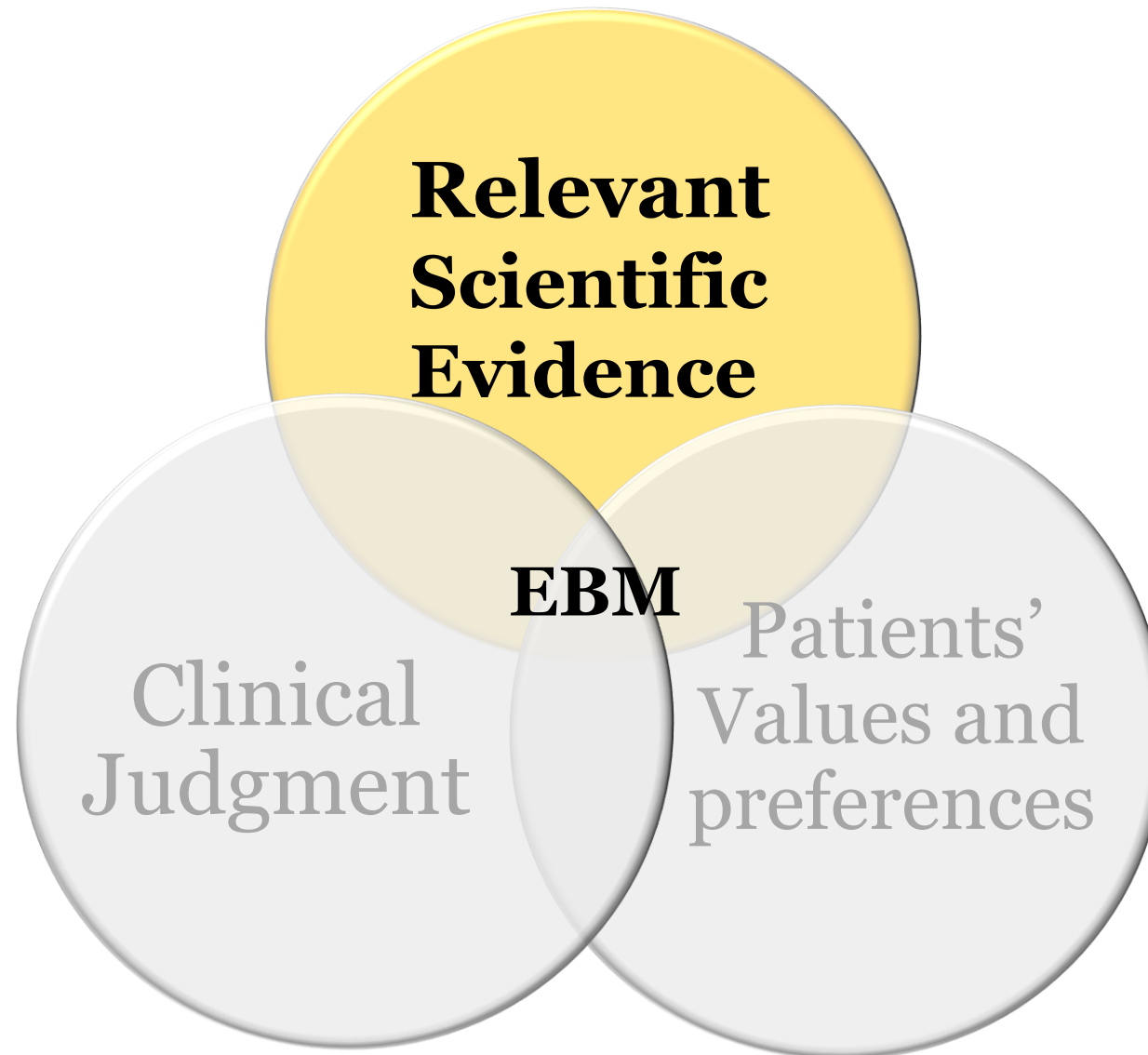
Next Generation Sequencing Platforms

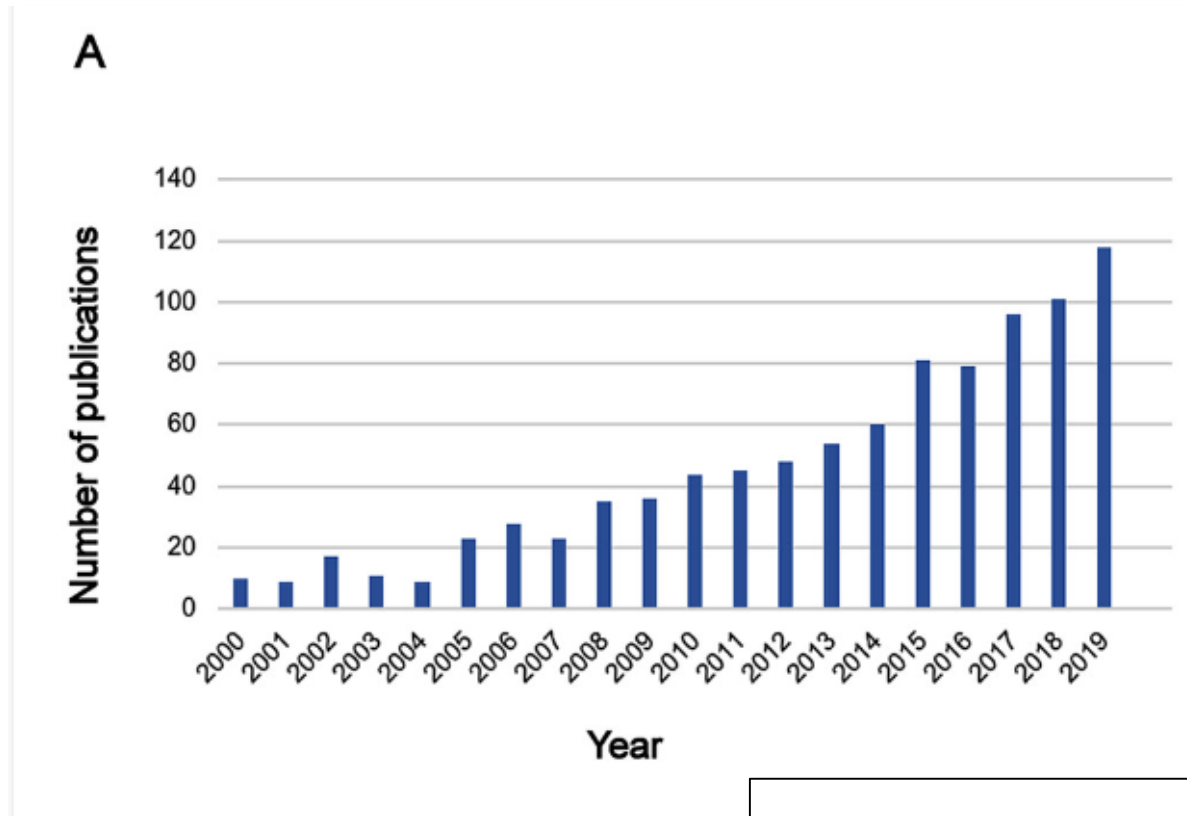


2022

NGS in NSCLC







Un totale di 927 articoli pubblicati in 325 riviste

[Integr Cancer Ther.](#) 2020 Jan-Dec;19:1534735420959442. doi: 10.1177/1534735420959442.

Research Trends of Acupuncture Therapy on Cancer Over the Past Two Decades: A Bibliometric Analysis

Jing Guo ¹, Lixia Pei ¹, Lu Chen ¹, Hao Chen ², Dongmei Gu ¹, Chen Xin ¹, Yongjun Peng ¹, Jianhua Sun ¹

Electroacupuncture Versus Gabapentin for Hot Flashes Among Breast Cancer Survivors: A Randomized Placebo-Controlled Trial

Jun J. Mao, Marjorie A. Bowman, Sharon X. Xie, Deborah Bruner, Angela DeMichele, and John T. Farrar

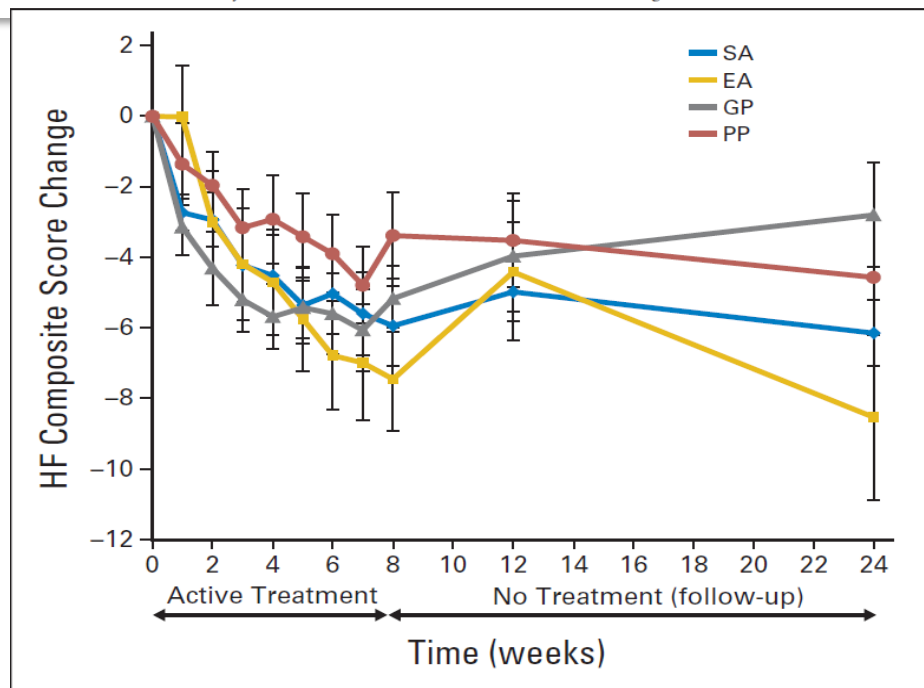
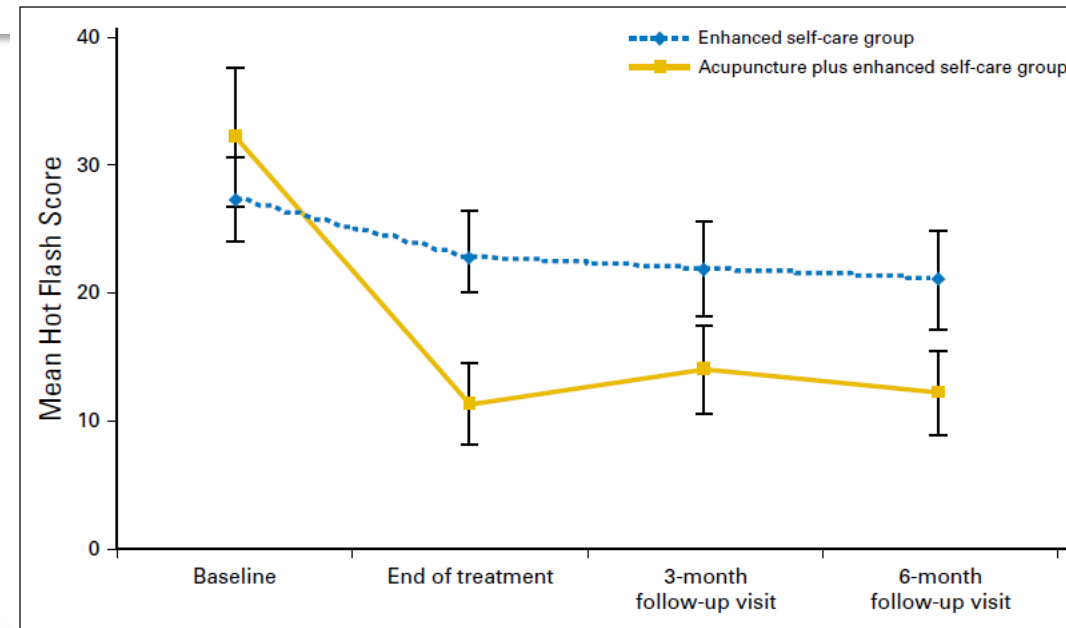


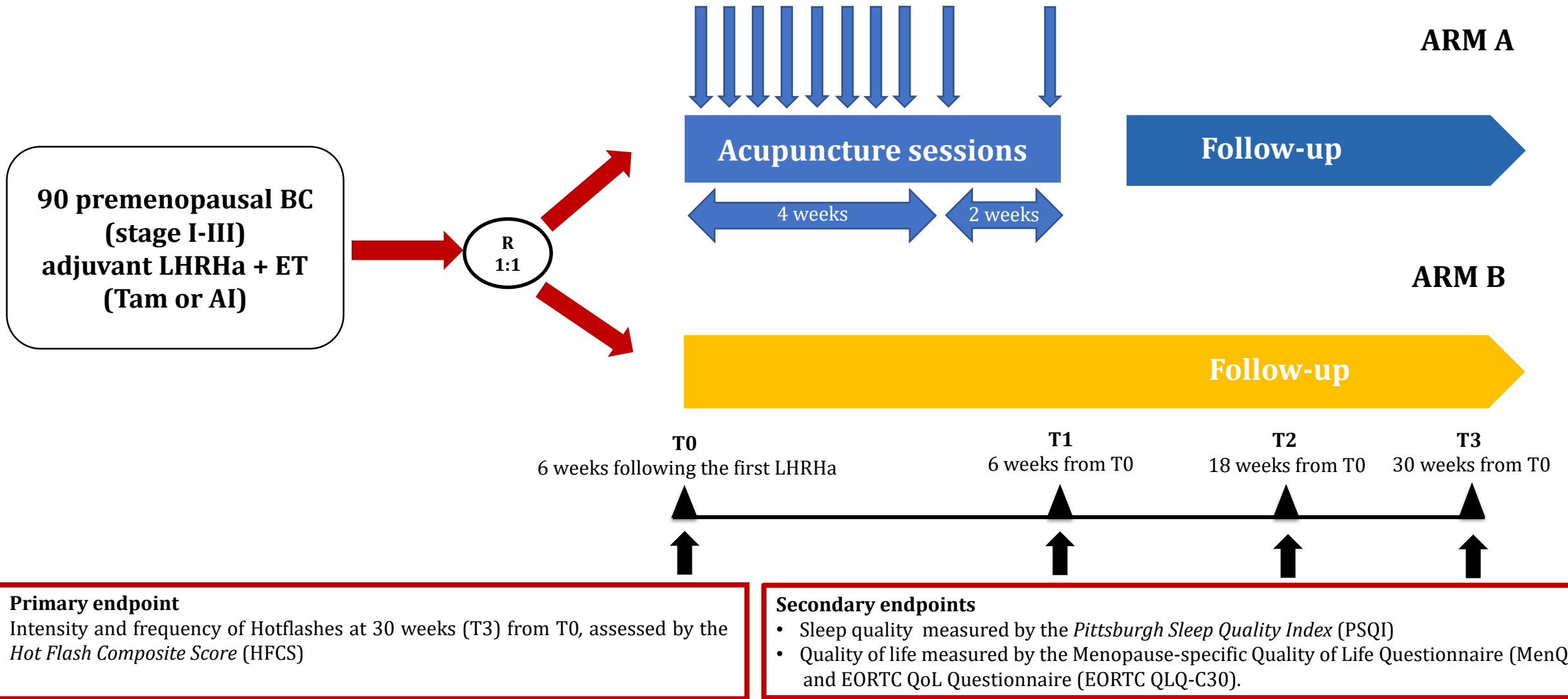
Fig 2. Mean change in hot flashes (HFs) by treatment groups over time. EA, electroacupuncture; GP, gabapentin; PP, placebo pill; SA, sham acupuncture.

Acupuncture As an Integrative Approach for the Treatment of Hot Flashes in Women With Breast Cancer: A Prospective Multicenter Randomized Controlled Trial (AcCliMaT)

Grazia Lesi, Giorgia Razzini, Muriel Assunta Musti, Elisa Stivanello, Chiara Petrucci, Benedetta Benedetti, Ermanno Rondini, Maria Bernadette Lieabue, Laura Scaltriti, Alberto Botti, Fabrizio Artioli, Pamela Mancuso.



AcuHOTFLASH Study Design



Evidenza scientifica: Linee guida

ASCO-SIO, AIOM, ESMO and NCCN





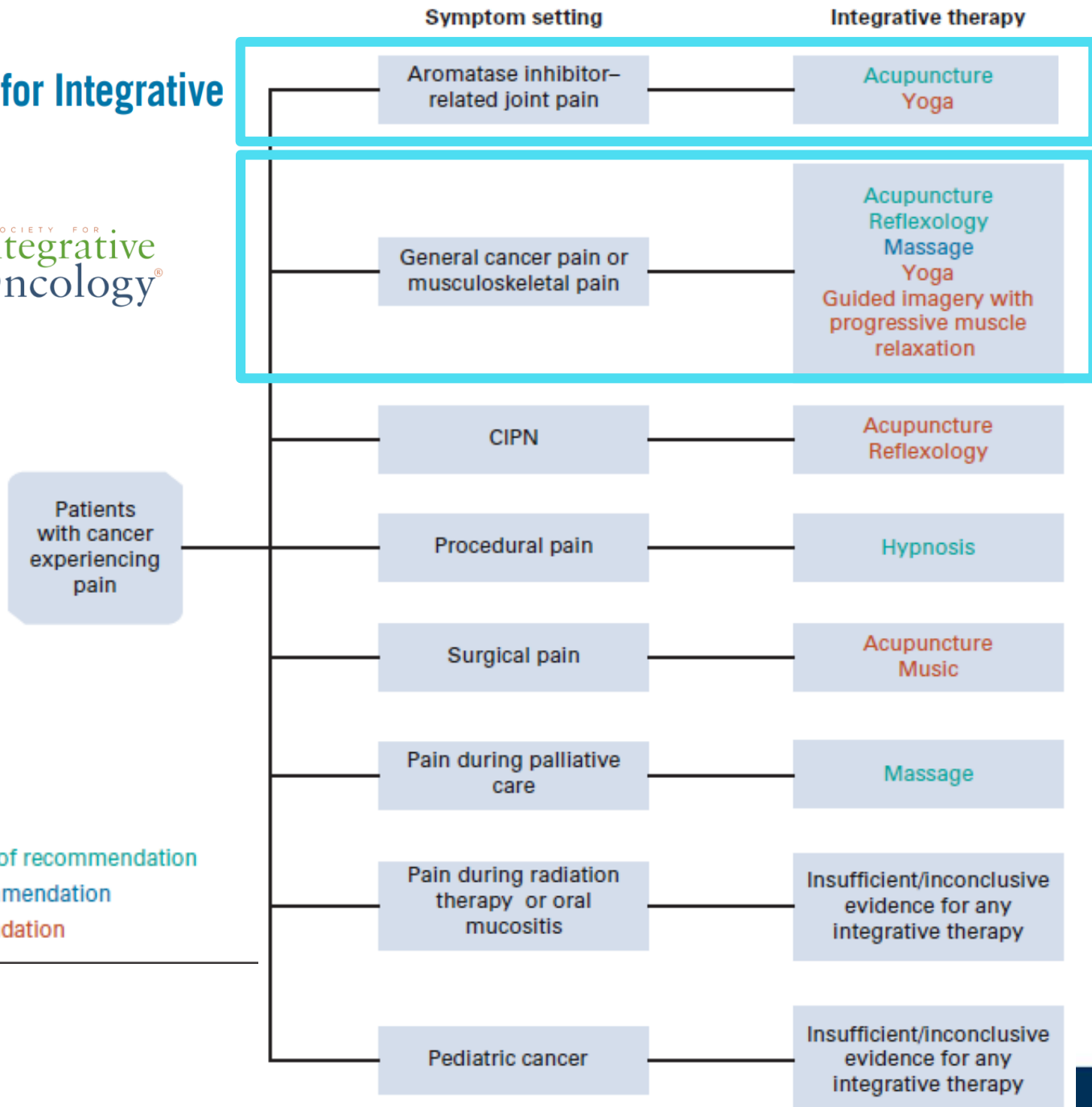
Integrative Therapies During and After Breast Cancer Treatment: ASCO Endorsement of the SIO Clinical Practice Guideline



Gary H. Lyman, Heather Greenlee, Kari Bohlke, Ting Bao, Angela M. DeMichele, Gary E. Deng, Judith M. Fouladbakhsh, Brigitte Gil, Dawn L. Hershman, Sami Mansfield, Dawn M. Mussallem, Karen M. Mustian, Erin Price, Susan Rafte, and Lorenzo Cohen

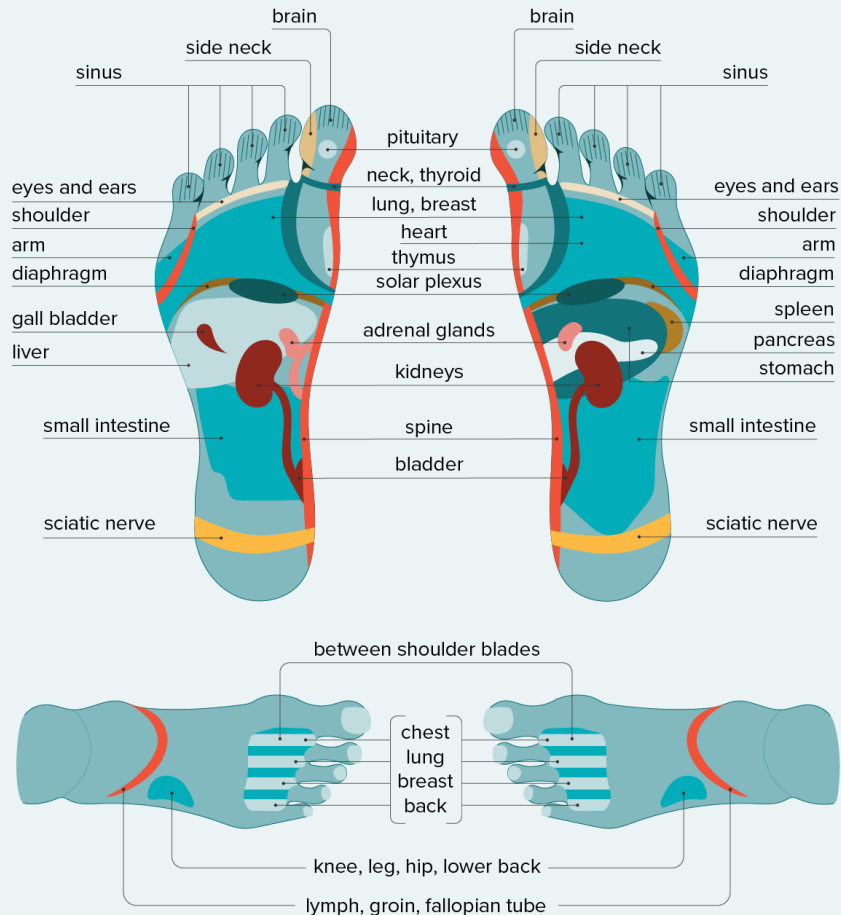
Symptom		Recommendation
CINV –chemotherapy induced nausea and vomiting	Acupressure Elettroacupuncture	Grade B
FATIGUE	Acupuncture	Grade C
PAIN	Acupuncture	Grade C
HOT FLASHES	Acupuncture	Grade C
ANXIETY STRESS REDUCTION	Acupuncture	Grade C
MOOD DISORDER DEPRESSION	Acupuncture	Grade C

Integrative Medicine for Pain Management in Oncology: Society for Integrative Oncology-ASCO Guideline



Notes:
 Intermediate quality of evidence; moderate strength of recommendation
 Low quality of evidence; moderate strength of recommendation
 Low quality of evidence; weak strength of recommendation

Foot Reflexology Chart



- ❖ Digitopressione stimolare aree/punti che per via riflessa promuovono reazioni fisiologiche nel corpo
- ❖ Corrispondenza tra specifici aree/punti su mani e piedi e ghiandole e organi interni
- ❖ Setting oncologico: **dolore** muscoloscheletrico e dolore correlato al tumore in generale, promuovere **rilassamento, migliorare qualità della vita**



National
Comprehensive
Cancer
Network[®]

Le **NCCN guidelines** raccomandano l'agopuntura per **dolore, fatigue, nausea vomito e vampate di calore** in un setting di cure palliative e survivorship.

Oltre **80%** dei Centri Oncologici riconosciuti dal **National Cancer Institute** raccomandano l'agopuntura per la gestione dei sintomi legati alle terapie oncologiche

J Natl Cancer Inst Monogr (2017) 2017(52): 1gx005

doi: 10.1093/jncimonographs/1gx005
Article

ARTICLE

**The National Cancer Institute's Conference on
Acupuncture for Symptom Management in Oncology:
State of the Science, Evidence, and Research Gaps**

Farah Z. Zia, Oluwadamilola Olaku, Ting Bao, Ann Berger, Gary Deng, Arthur Yin Fan, Mary K. Garcia, Patricia M. Herman, Ted J. Kaptchuk, Elena J. Ladas, Helene M. Langevin, Lixing Lao, Weidong Lu, Vitaly Napadow, Richard C. Niemtzow, Andrew J. Vickers, Xin Shelley Wang, Claudia M. Witt, Jun J. Mao



ESMO POCKET GUIDELINES

BREAST CANCER

2020

Search icon | Information icon

Management of symptoms

Assess using PROMs

Pain	Cancer-related fatigue	CDK inhibitor-induced neutropaenia
Non-infectious pneumonitis related to mTOR or CDK4/6 inhibitors	Mucositis/stomatitis	Dyspnoea
Nausea and vomiting	Endocrine toxicities of mTOR inhibition	HFS
CIPN	Postmenopausal symptoms	Dyspareunia

- Systemic hormone therapy not recommended
- General: mind-body interventions, physical training, CBT
- Hot flushes: venlafaxine, oxybutynin, gabapentin, clonidine, acupuncture
- Sleep disturbances: melatonin

Qualità Globale delle prove	Raccomandazione clinica	Forza della raccomandazione
BASSA	In popolazione con artralgie in corso di terapia con inibitori delle aromatasi un trattamento con agopuntura manuale può essere preso in considerazione come prima opzione (7,8)	Positiva debole



SGBCC 2023



15 - 18 March 2023

18TH ST. GALLEN INTERNATIONAL BREAST CANCER CONFERENCE 2023

Gemelli



Fondazione Policlinico Universitario Agostino Gemelli IRCCS
Università Cattolica del Sacro Cuore



SGBCC 2023

18TH ST. GALLEN INTERNATIONAL BREAST CANCER CONFERENCE 2023

st.gallenoncology
conferences

15 - 18 March 2023, Vienna/Austria

Topic: Well-being for Breast Cancer Survivors

Acupuncture should be considered a standard treatment option for breast cancer survivors (and should be appropriately covered by insurance or national governments) to alleviate symptoms of arthralgias related to AI-based therapy and/or neuropathy related to chemotherapy

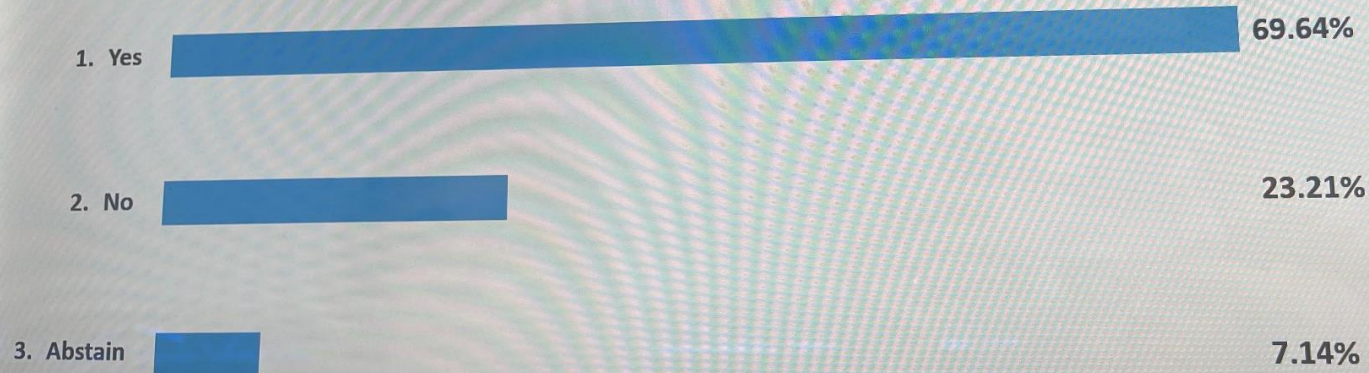
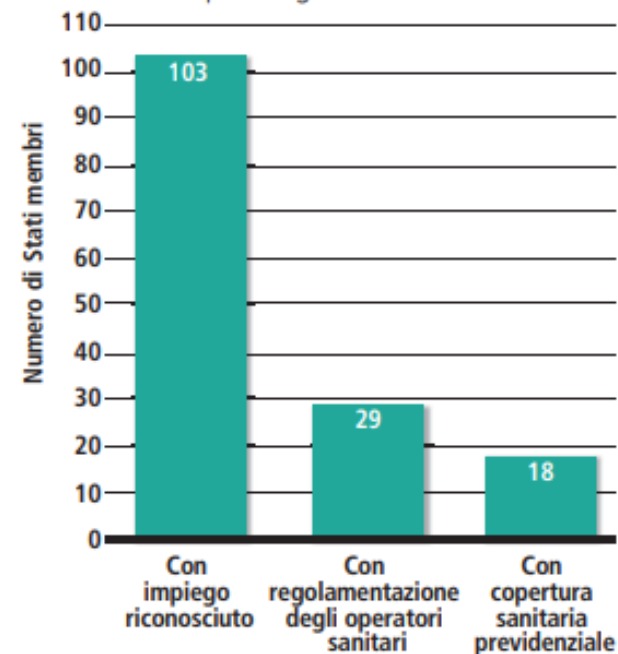


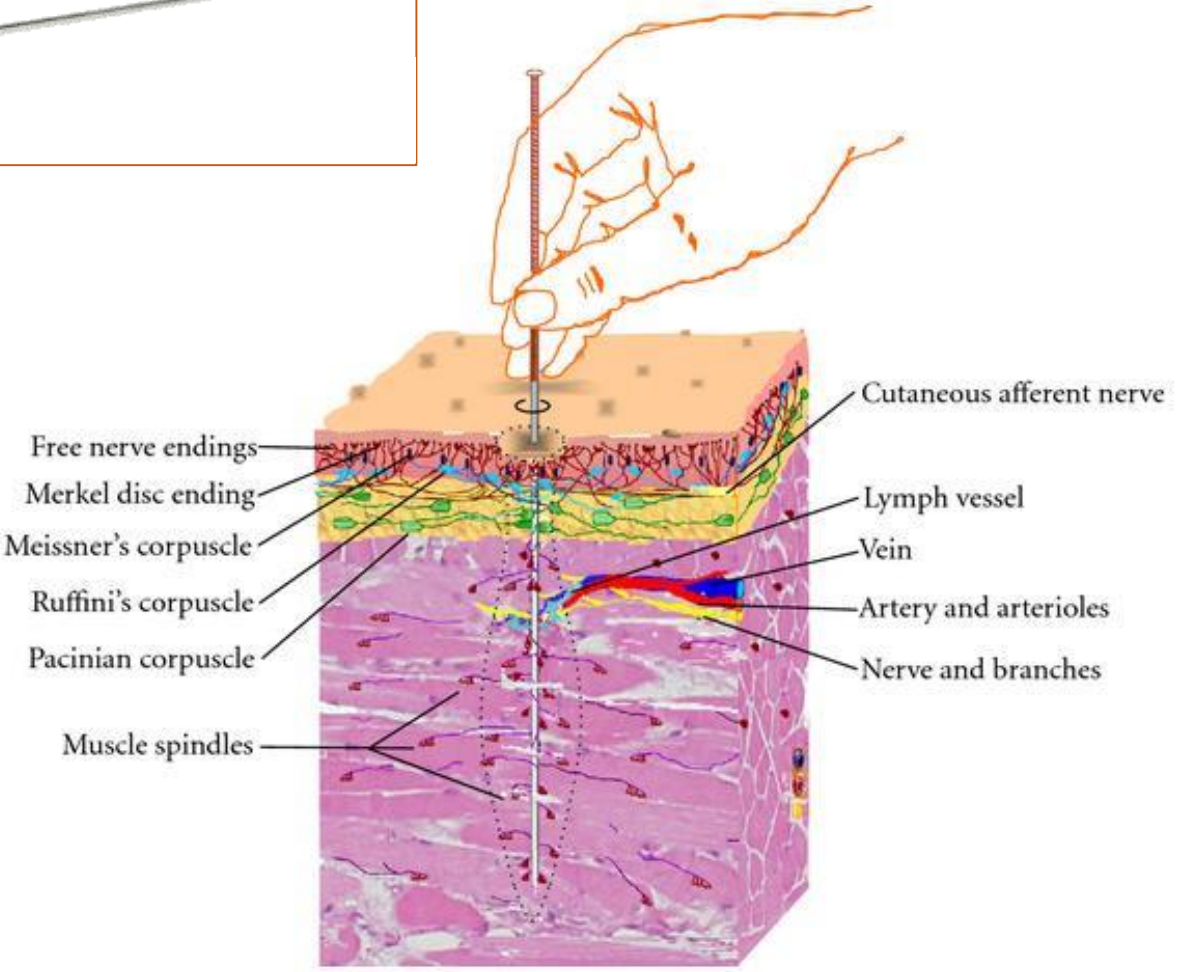
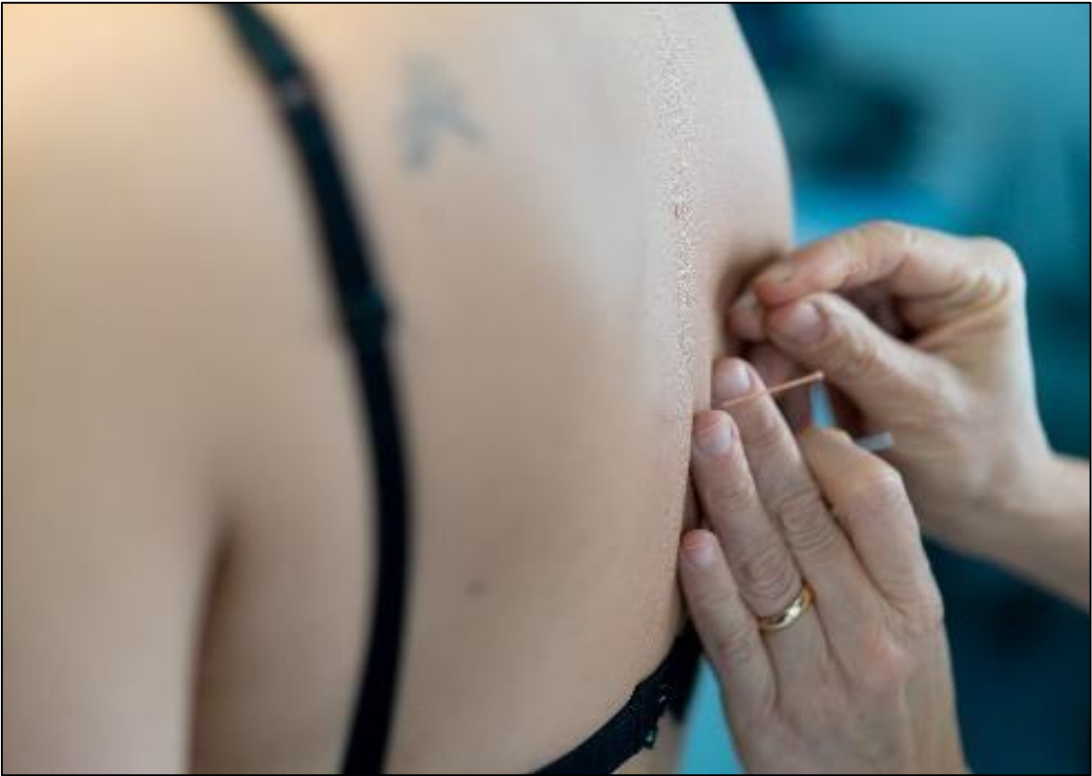


Grafico 2: Impiego dell'agopuntura
da parte degli Stati membri

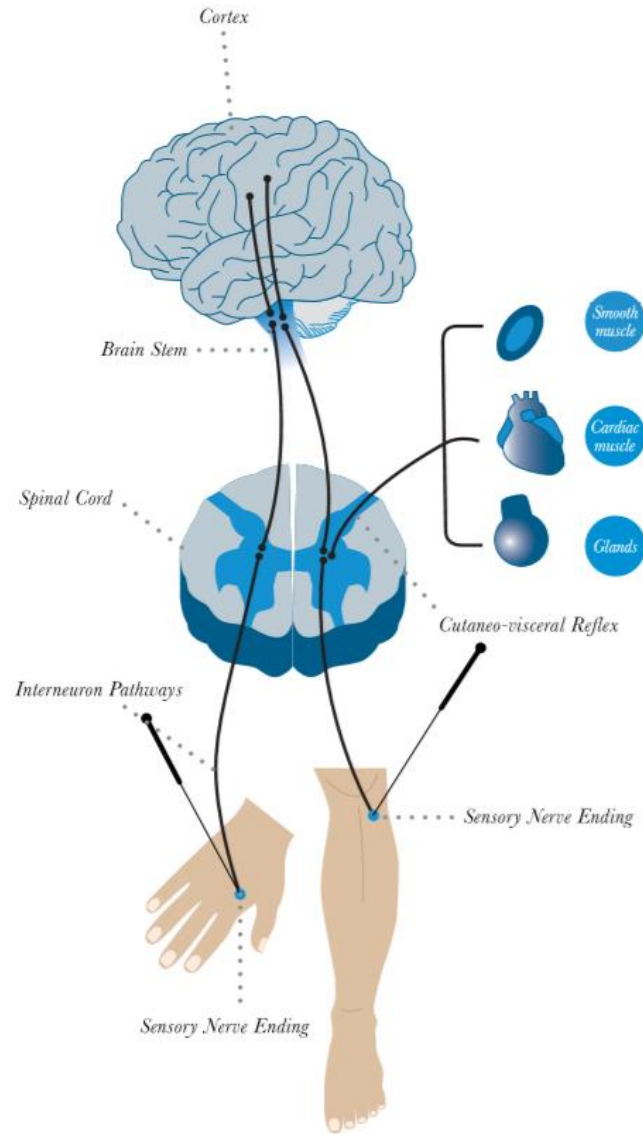


Fonte: dati provvisori dalla 2nd WHO Global TRM Survey all'11 giugno 2012.

Sicurezza e Scarsa invasività



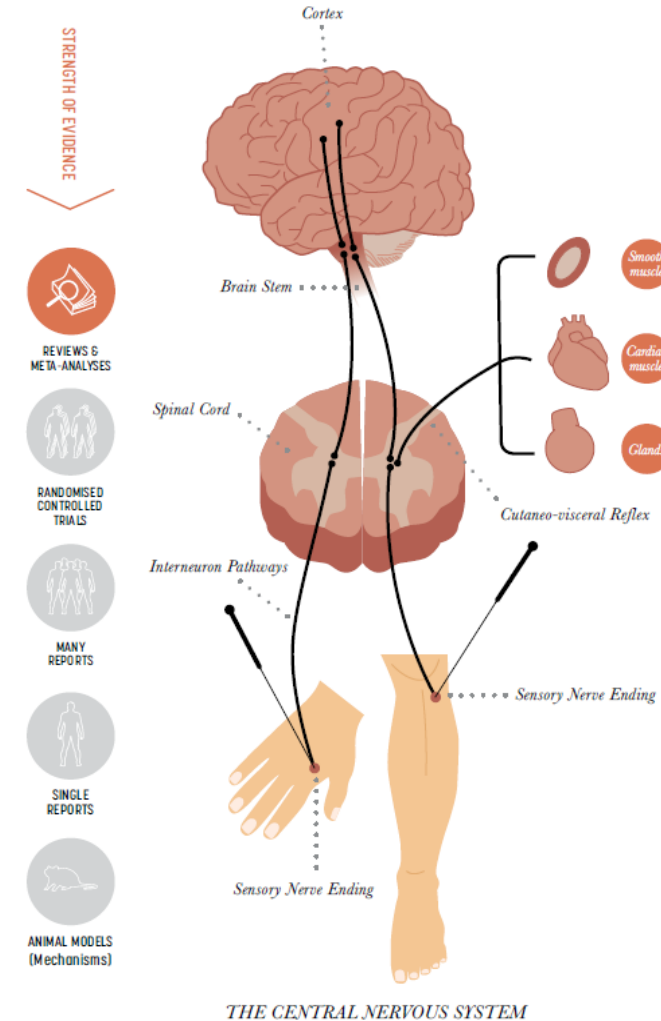
Meccanismo d'azione



- ❖ stimolazione i recettori sensoriali
- ❖ attivazione sistema ipotalamo-ipofisario
- ❖ rilascio di neurotrasmettitori in particolare **endorfine = oppiacei naturali del corpo**

Meccanismo d'azione

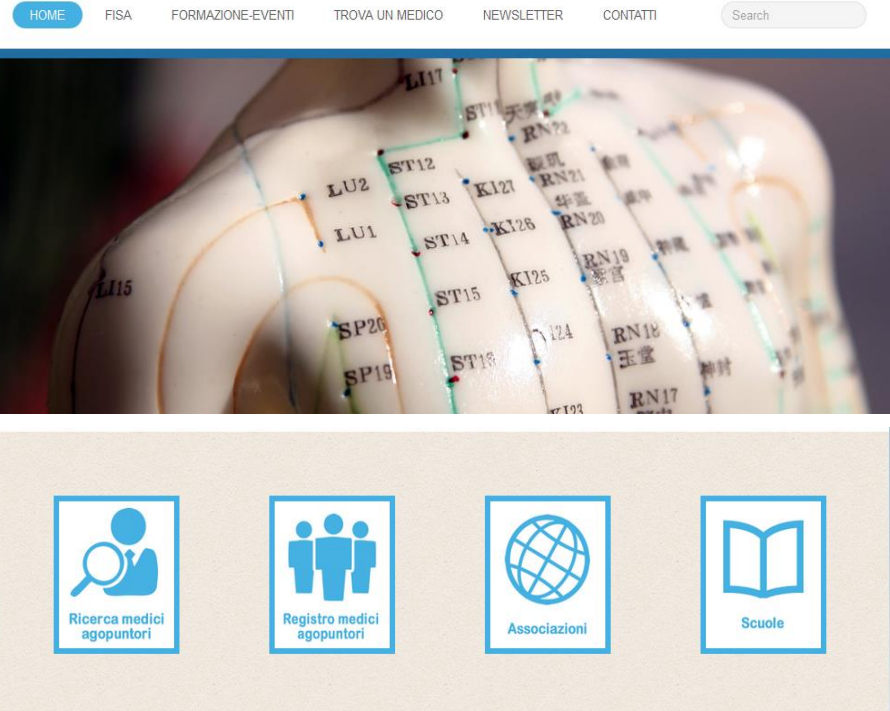
- ❖ Proprietà sedative sul **dolore**
- ❖ Miglioramento del **tono dell'umore**
- ❖ **Permettono il controllo** attraverso stimolazione, inibizione, modulazione, integrazione di molte funzioni dell'organismo, quali **secrezioni endocrine** e **ritmi di attività viscerali**

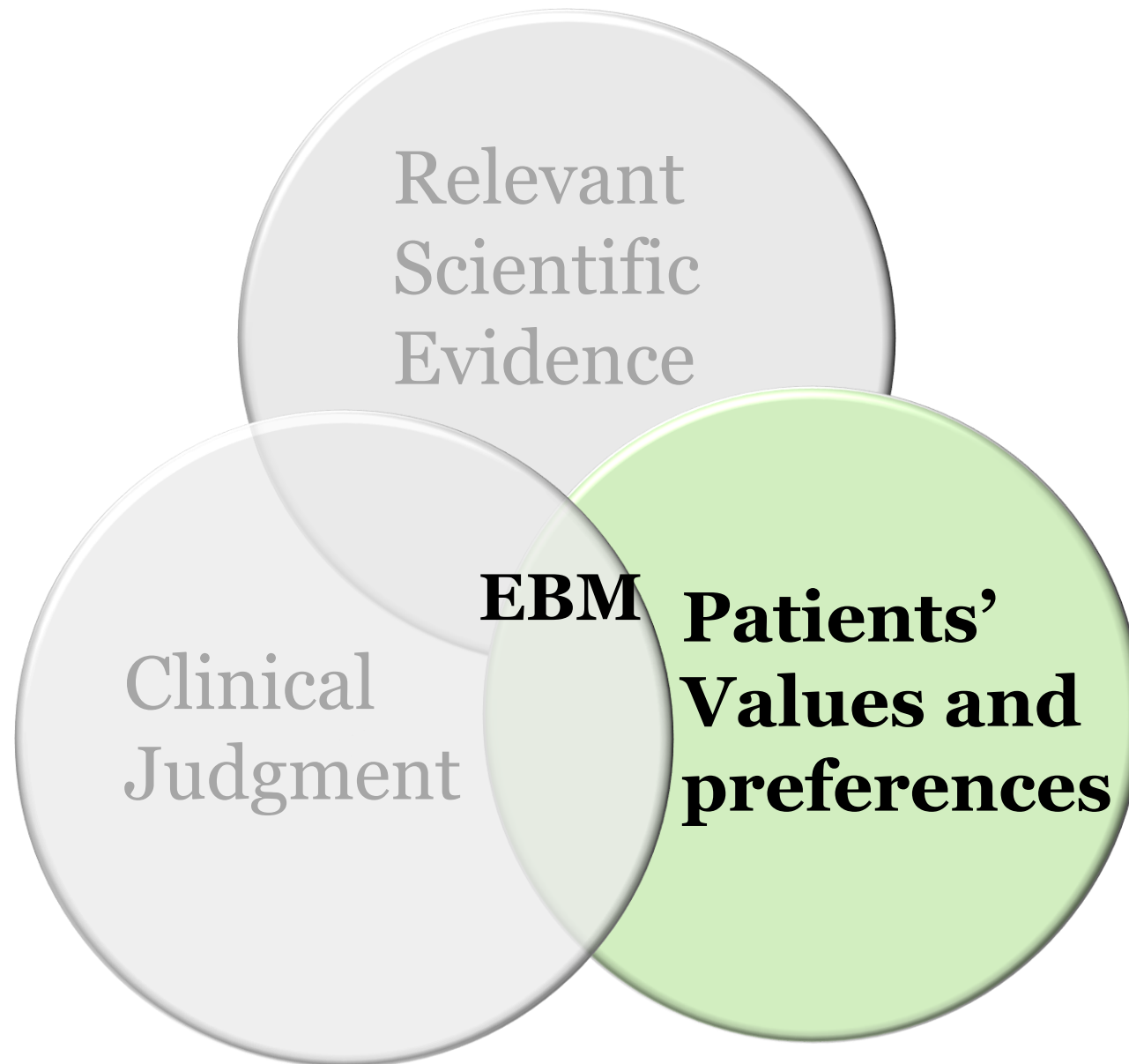




Registro degli Agopuntori presso ordine dei medici

In base alla sentenza della Sezione penale della Corte di Cassazione del 19/07/82 **l'agopuntura in Italia** è un **atto medico** pertanto **può essere praticata solo da Medici Chirurghi**





Valori e preferenze del paziente



Breast Cancer: 73% dopo la diagnosi, 43% durante cure oncologiche

ASCO 2021



40 % dei pazienti oncologici si avvale di qualche forma di terapia complementare

Malassiotis A et al, Ann Oncol 2005



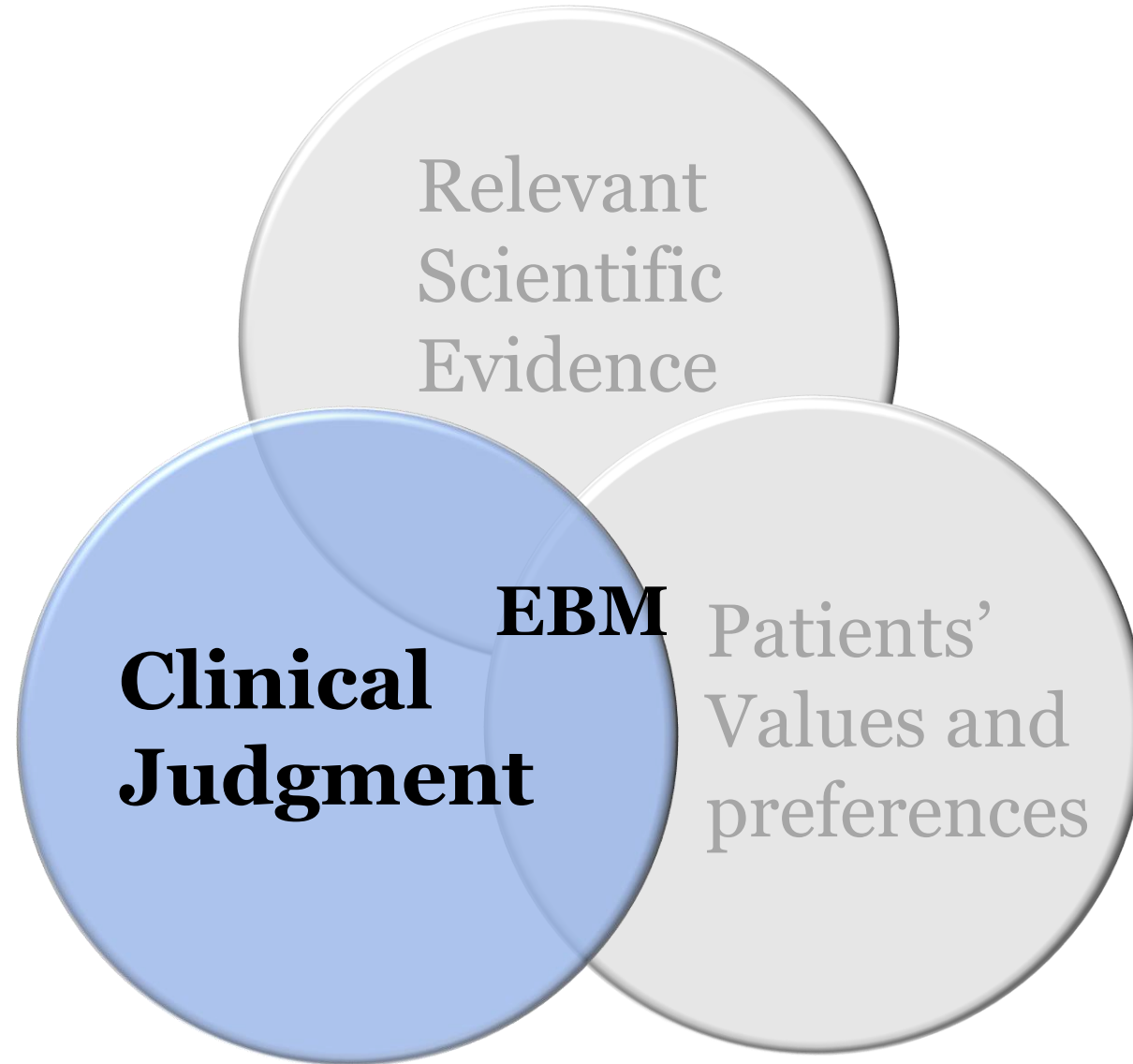
48,9% dei pazienti oncologici usano o hanno recentemente usato CAM

Berretta M et Al, Oncotarget 2017

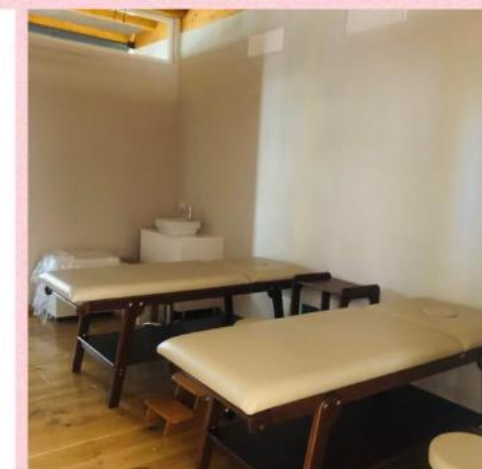
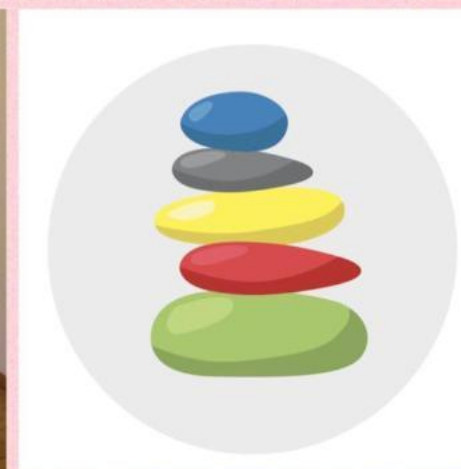
Personalizzata e Centrata sulla persona

- ❖ Malattia secondo la **Medicina Cinese**
- ❖ **Personalizzata**, non prevede applicazione di protocolli rigidi
- ❖ **Centrata sulla persona** e non sul sintomo/malattia





Centro Komen Italia per i Trattamenti Integrati in Oncologia



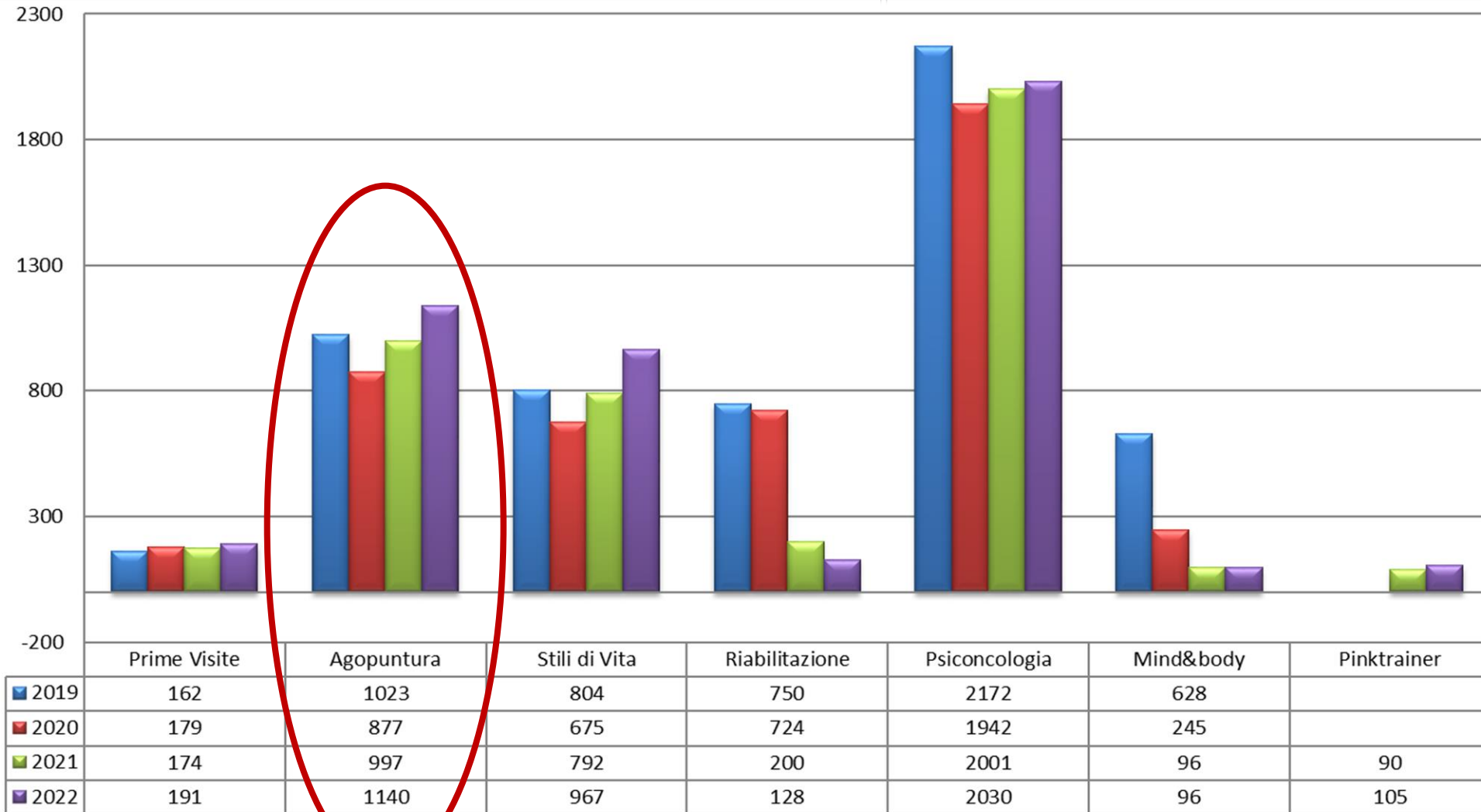
**Susan G.
Komen®**
ITALIA
PER LA LOTTA AI TUMORI DEL SENO







Centro Komen Italia



Chemio/radioterapia

- Nausea/vomito
- Dolori muscoloscheletrici
- Fatigue
- Neuropatie periferiche(CIPN)

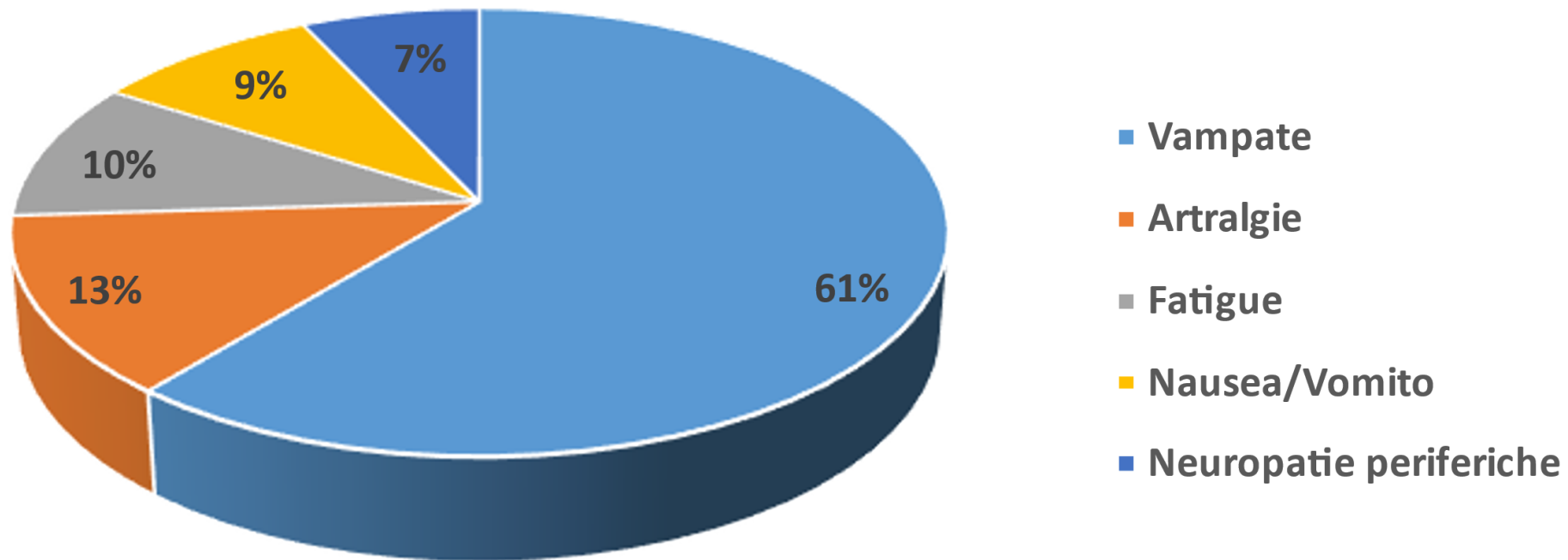


Terapie Ormonali

- Vampate di calore/sudorazioni notturne
- Artralgie
- Insonnia
- Ansia



Centro Komen Italia



Agopuntura nella Breast Unit

- Personale qualificato
- Non disponibile in tutti i centri
- Rimborsabilità regionale

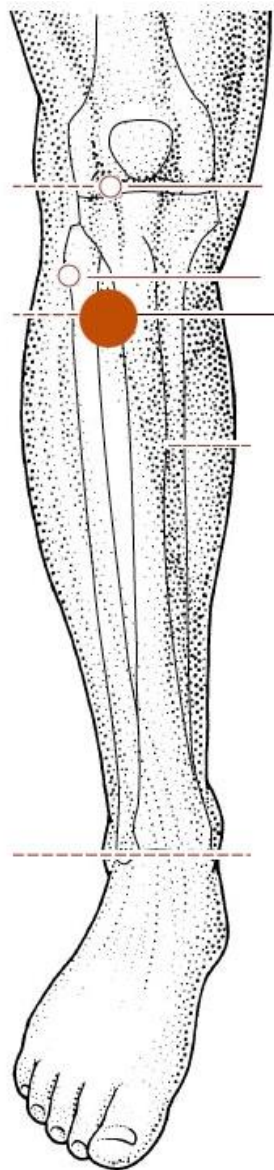


CONS

PROS



- ✓ Economica
- ✓ Efficace
- ✓ Priva Tossicità
- ✓ Effetti duraturi nel tempo



Zusunli ST-36

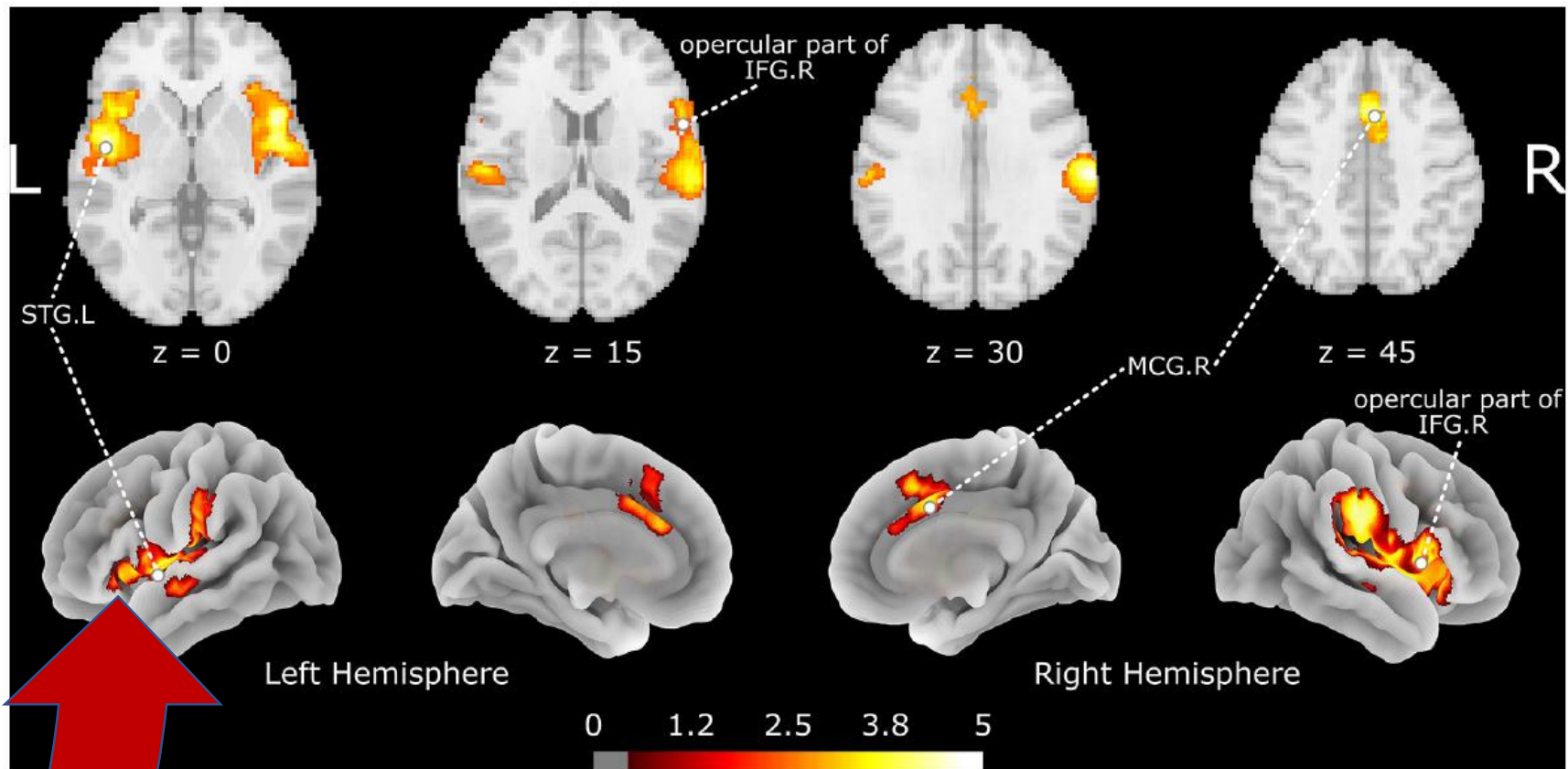


FIGURE 1 Brain regions activated by acupuncture at ST36. The color map indicates the SDM-Z values with a cutoff level of 0.5; STG, superior temporal gyrus; IFG, inferior frontal gyrus; MCG, median cingulate/paracingulate gyri; L/R indicates the left or right hemisphere.

Vi aspettiamo a Roma!!

**RACE
FOR THE
CURE**

**susan g.
komen.**
ITALIA

PER LA LOTTA
AI TUMORI
DEL SENO

**4-5-6-7
MAGGIO**
ROMA Circo Massimo

BARI	12-14	maggio
BRESCIA	15-17	settembre
BOLOGNA	22-24	settembre
NAPOLI	23-24	settembre
MATERA	29 settembre-1 ottobre	

